



"Mt. Burdell Sunset" by John Gowan

New Shows, New Artists at Riverfront Gallery

Winter blossoms into spring with two new featured shows at Riverfront Art Gallery, 132 Petaluma Blvd. North in Petaluma. The Spring show opens Tuesday, March 16, and continues through Sunday, May 16. The opening reception, with featured artists and other gallery artists in attendance, is Saturday, March 20, from 6 to 9 PM.

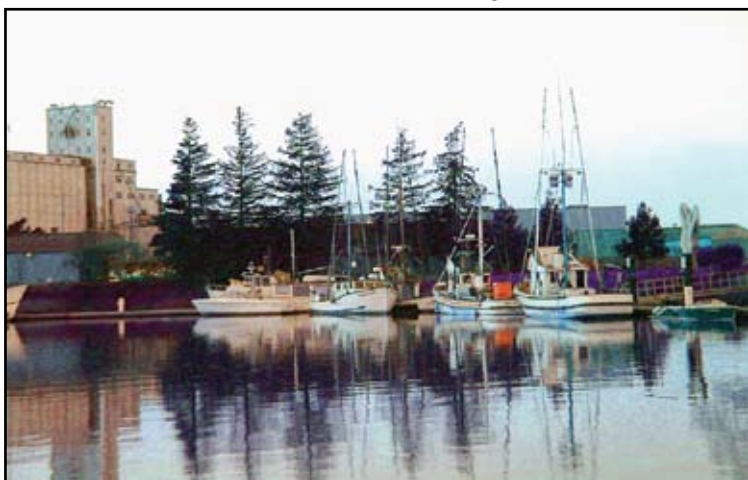
John Gowan's featured show is titled "An Expression of Light." His highly realistic and evocative paintings are inspired by John's love of the natural world and his desire to help preserve California's wilderness. He notes, "Sometimes after hours of hiking, I arrive at a view that is so astonishing that only by sit-

ting down and recreating that beauty on canvas do I feel a deeper connection to the land."

The second featured artist is gallery co-founder Jerrie Jerné, whose show is "The Splendor of Spring." Jerrie says, "Spring is one of my favorite times of the year. Nature awakes with a burst of color, and I love to get out and capture the show."

Riverfront also welcomes photographers Asmund Gjevnik and Bill Hollister as new members and painters Mark Lifvendahl and Robert Pitonzo as guest artists.

All visitors will receive 10% off their purchases during Art Walks, the second Saturday of each month. For more information call 707.775.4ART or visit riverfrontartgallery.com.



Riverfront Art Gallery

Fine Art Paintings and Photography by over 20 local Artists

132 Petaluma Blvd North
707-775-4ART (4278)
www.riverfrontartgallery.com

Open Tuesday-Sunday 10:30 to 7:00 p.m.
Friday and Saturday until 8:00 p.m.

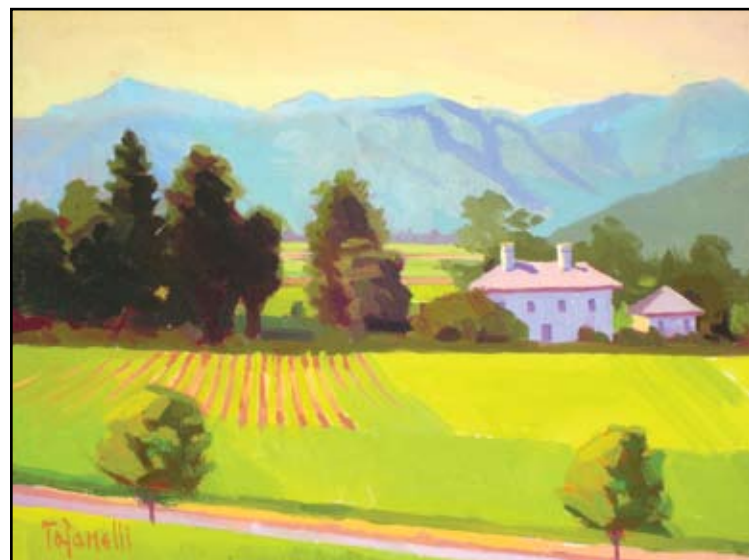
ARTS

Art in the Garden

Join Dimensions Galleria for "Beyond the Garden Wall," a garden art show featuring some of Sonoma County's most talented artists. The show will open on March 17 and run through May 30, with an artist's reception on Friday, March 19, from 6 to 9 PM.

Dimensions Galleria will take on the look of an outdoor space, which you will enter through an artful gate built by Michael Singer. The exhibit will feature metal sculpture by Sean Paul Lorenz and Susan Spicer; colorful totems and functional ceramics by Alexis Moyer and Suki Diamond; Nuala Creed's playful ceramic children; birdhouses by Ken Rhoads, Mary Laures, and Cheri Degenhardt; Nancy Winn's paper mache figurines; Susan Hersey's illuminated sculptures and wall hangings; and Angela Casazza's mosaic birdbaths, urns and vessels. The walls will be hung with fine art by Barbara Kelly, Mylette Welch, Ruby Newman, and Clay Vajgrt.

Dimensions Galleria is located at 11 Petaluma Blvd. North. Call 707.773.3515 or visit dimensionsgalleria.com for more information.



"Napa Valley Vineyards" by Alfredo Tofanelli

Petaluma artist Alfredo Tofanelli will have a one-man show at the Napa Valley Museum starting on March 5. One of Tofanelli's paintings was judged "Best in Show" at the Museum's juried exhibit last summer. The opening reception will be on March 5 from 5:30 to 7:30 PM at the Napa Valley Museum in Yountville. More than 50 paintings will be on exhibit, including plein air landscapes as well as portrait and figurative paintings. The exhibition runs from March 5 through April 18. Tofanelli also has a workshop scheduled for the end of March at L'Atelier aux Couleurs in Petaluma, and he will be a featured artist at Pelican Art Gallery in April.



Buy Local...
Jewelry • Contemporary Art • Gifts

115 Petaluma Blvd. N. Petaluma, CA 94952
707 763-3515
www.dimensionsgalleria.com

Award winning artist including
Best of Show
at the Napa Valley Museum

PORTRAITURE
by
Alfredo L. Tofanelli



OILS • PASTELS | INSTITUTIONAL • FAMILY



A professional artist for over 25 years
www.alfredotofanelli.com

Weekly oil painting classes
on Painting the Head & Figure
at **L'Atelier aux Couleurs**
the art academy of Petaluma
www.acartacademy.com



Calabi Gallery presents a new show celebrating Women's History Month. An opening reception will be held on Sunday, March 7, from 1 to 4 PM (one day before International Women's Day). The gallery's primary goal is to honor and give exposure to under-appreciated artists. Women artists have historically received less attention than male artists of equivalent talent. Featured artists include Genevieve Barnhart, Gail Chase Bien, Dorr Bothwell, Minerva Chapman, Holly Downing, Pamela Glasscock, April Gornik, Ynez Johnston, Mary Fuller McChesney, Karima Muyaes, June Wayne, and Penny Wolin, among many others. Calabi Gallery is open Wednesday through Sunday, 11 AM to 5 PM, at 144 Petaluma Boulevard North. Call 707.781.7070 or visit calabigallery.com for more information.